



The hotel is located just one minute's walk from Akasaka Station. Akasaka is the glamorous area where you will find the State Guest House, and 'Akasaka Sacas' is only 3 minutes away on foot. In addition, some of the major stations in the city can be reached in one train with no transfers. It is perfect for business and leisure. This hotel accepts cashless payment. Please use a credit card or QR code payment system for payments of charges.

ROOM EQUIPMENTS / AMENITY



LCD TV



Video on demand (charges apply)



Wi-Fi available in all rooms



Refrigerator



Electric kettle



Extension telephone



Air purifier



Ionic hair dryer



Shampoo



Conditioner



Body wash



Body sponge



Bath towel



Face towel



Gown type pajamas



Toothbrush



Razor



Slippers



Air freshener



Women's amenity kit

* Women's amenity kit is offered at the lobby.
 * Mobile charger is lent at the front desk.

Women's amenity kit



* Image for illustrative purposes.

Central type water purification system (Ryosui Kobo)



Ryosui Kobo's central water purification has been implemented. All the water to be used in the hotel including water for the washstand, the shower, and the toilet has been changed into gentle water by it.

NUMBERS OF GUEST ROOMS : 139

Room Type	Room size (㎡)	Bed size(mm)	Numbers of rooms	Floor
Double (main building)	13	1400	84	2~7
Comfort Double (main building)	13	1600	6	2~7
Ladies' Double (main building)	13	1400	6	5
Upper-floor double room (main building)	13~15	1400	5	8
Grand Terrace Double (main building)	14~17	1400	4	8
Grand Deluxe Double (main building)	20~22	1600	2	8
Superior Double (annex)	11~17	1400	19	1~7
Deluxe Double (annex)	22	1600 (sofa bed available)	5	3~7
Twin (main building)	13	1000 × 2	6	2~7
Premium Twin (annex)	31	1200 × 2	1	7
Universal Double	16	1200	1	2

- 2 guests available: 138 rooms
- 3 guests available: 5 rooms

- Non-Smoking Room: 105 rooms (Main building 4-8 floor. All rooms in annex)
- Smoking Room: 34 rooms (Main building 2-3 floor)

BREAKFAST

【Ueshima Coffee Shop (1st floor)】

OPEN HOURS : 6:30~11:00AM

NUMBERS OF SEATS : 57

MENU : The beautiful aromatic nel drip coffee and offers 4 varying options from our menu.

- Boiled eggs and toast + coffee, tea or orange juice
- Bacon, eggs and toast + coffee, tea or orange juice
- Croque monsieur + coffee, tea or orange juice
- Coleslaw & egg salad sandwich(with morning salad) + coffee, tea or orange juice

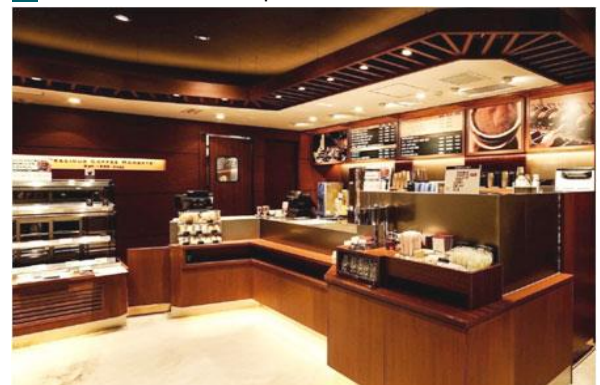
PRICE : 640 yen (tax included)

Premium Twin



* Image for illustrative purposes.

Ueshima Coffee Shop (1st floor)



ABOUT THE HOTEL

ADDRESS : 6-3-17 Akasaka, Minato-ku, Tokyo 107-0052

TEL : (+81)3-5573-2031 FAX : (+81)3-5573-2035

CHECK-IN/OUT : 15:00/11:00

AVAILABLE : VISA • MASTER • JCB • AMEX • DINERS • DISCOVER • UnionPay •

PAYMENT METHODS LINE Pay • PayPay • d barai • au PAY • Rpay • ALIPAY • WeChatPay

*This hotel accepts cashless payment.

E-MAIL : fresa_akasaka@сотetsu-group.jp

URL : <https://fresa-inn.jp/en/akasaka/>

ACCESS : One minute's walk from Exit 6 in Akasaka Station on the Tokyo Metro Chiyoda Line

A 8 minute walk from Exit 10 in Tameike-sanno Station on the Tokyo Metro Nanboku Line

A 10 minute walk from Exit 10 in Akasaka-mitsuke Station on the Tokyo Metro Ginza Line



LOCATION

- Akasaka-mitsuke Sta. Exit 10 (Approx 10 minutes by on foot)
(Tokyo Metro Marunouchi Line)
- Tameike-sanno Sta. Exit 10 (Approx 8 minutes by on foot)
(Tokyo Metro Ginza Line)
- Tokyo sta. → Kokkai-gijidomae Sta. → Akasaka Sta. (Approx 15 minutes by train)
(Tokyo Metro Marunouchi Line) (Tokyo Metro Chiyoda Line)
- Omote-sando Sta. → Akasaka Sta. (Approx 4 minutes by train)
(Tokyo Metro Chiyoda Line)
- Haneda Airport Terminal 1 → Hamamatsucho Sta. → Yurakucho Sta. →
(Tokyo Monorail) (JR Yamanote Line) (Walking)
- Hibiya Sta. → Akasaka Sta. (Approx 55 minutes by train)
(Tokyo Metro Chiyoda Line)
- Narita Airport Terminal 2 → Nippori Sta. → Nishi-nippori Sta. →
(Keisei Limited Express Skyliner) (JR Yamanote Line) (Tokyo Metro Chiyoda Line)
- Akasaka Sta. (Approx 70 minutes by train)

Cashless payments



* Image for illustrative purposes.

Self Check-in / Check-out Machines



* Image for illustrative purposes.

FACILITIES



Cashless payments



Self Check-in & out Machines



Smart check-in



Internet section



Wi-Fi available



Contactless IC key card



Vending machines



Coin-operated laundry



Courier service



Rental PC



Free amenity area

Free amenity area



* Image for illustrative purposes.

Six Sotetsu Fresa Inn Highlights!

1. Heartfelt smiles and hospitality

Offering service that makes you want to come back again.

2. Excellent location

Located within a five-minute walk from major city stations.

3. Comfortable livability

Free Wi-Fi, air purifier, high quality beds, gown type pajamas, and more...

4. Design and security

Room IC cards have been enhanced by designers to ensure complete security

5. Full set of amenities

Free amenities and ladies' amenities including bath additives and tea bags

6. Hygienic facilities

Our specialized staff take pride in their thorough cleaning

SOTETSU
FRÉSA
INN
FRÉsh · Sense · Amenity