



# Sotetsu Fresa Inn Ginza-Nanachome

Stylish hotel boasting of its excellent location.  
 And service standard catering to the needs of savvy travelers.  
 Ginza is a district with many upscale brand stores and renowned department stores.  
 Our location offers easy access to tourist spots and shopping areas in Tokyo!  
 We accept cashless payment only – credit card or QR code payment.  
 Please use a credit card or QR code payment system for payments of room charges.  
 We do not accept cash payment.

## ROOM EQUIPMENTS / AMENITY



LCD TV



Video on demand (charges apply)



Free Wi-Fi available



Refrigerator



Electric kettle



Extension telephone



Air purifier with humidifying function



Ionic hair dryer



Shampoo



Conditioner



Body wash



Bath towel



Face towel



Two-piece pajamas

### Skin care / Hair care amenities



\* Image for illustrative purposes.



Toothbrush



Slippers



Air freshener

\* Other complimentary amenities are available for your choice in the lobby.  
 \* Mobile charger is lent at the front desk.

## NUMBERS OF GUEST ROOMS : 286

Room Type	Room size (㎡)	Bed size(mm)	numbers of rooms	Floor
Single	11.18~11.74	1,400	110	3~13
Double	11.94	1,400	22	3~13
Comfort Double	12.46~13.87	1,400	99	3~13
Universal Double	18.99	1,400	1	3
Twin	14.83	1,200 × 2	22	3~13
Deluxe Twin	18.35	1,200 × 2	10	3~13
Premium Twin	23.46	1,200 × 2	22	3~13

● 2 guests available : 176 rooms

● Non-Smoking Room : 234 rooms (3,6~13 floor)

● Smoking Room : 52 rooms (4,5 floor)

## BREAKFAST

【Restaurant「Katsuki Ginza」(2nd floor)】

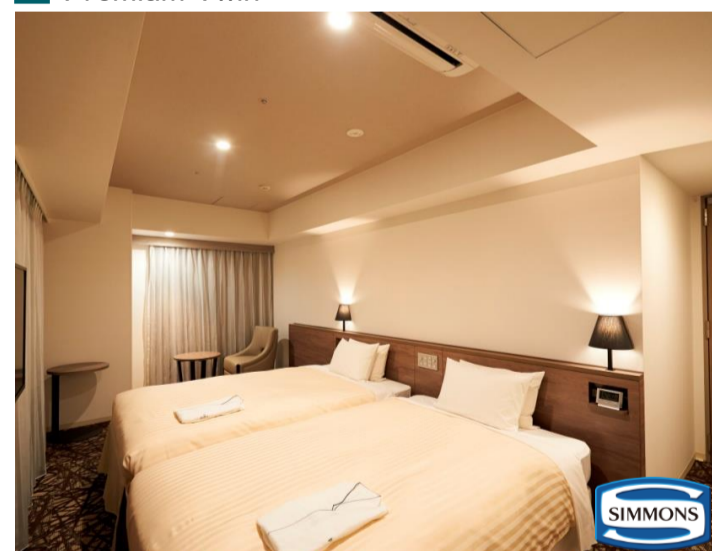
OPEN HOURS : 6:45~10:00(L.O.)

NUMBERS OF SEATS : 95

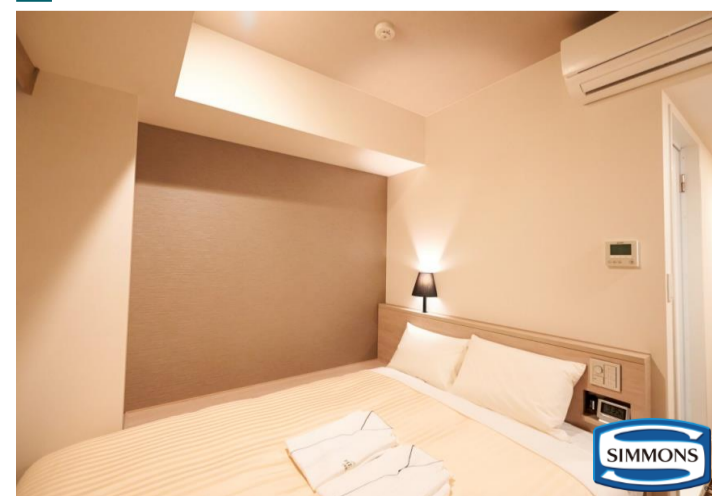
MENU : Japanese and Western-style buffet

PRICE : 1,530 yen (tax included)

### Premium Twin



### Comfort Double





## ABOUT THE HOTEL

ADDRESS : 7-11-12 Ginza, Chuo-ku, Tokyo 104-0061  
 TEL : (+81)3-6891-0203 FAX : (+81)3-6891-0902  
 CHECK-IN/OUT : 15:00/11:00  
 AVAILABLE PAYMENT : VISA・MASTER・JCB・AMEX・DINERS・DISCOVER・UnionPay  
 METHODS LINE Pay・PayPay・d barai・au PAY・Rpay・ALIPAY・WeChatPay  
 \* We accept cashless payment only. (no cash)  
 E-MAIL : fresa\_ginza7@sotetsu-group.jp  
 URL : https://fresa-inn.jp/en/ginza7/  
 ACCESS : A 7 minute walk from Ginza Exit in Shimbashi Sta. on the JR Lines  
 A 5 minute walk from Exit A3 in Ginza Sta. on the Tokyo Metro Ginza and Marunouchi Lines  
 A 5 minute walk from Exit A1 in Higashi-Ginza Sta. on the Toei Subway Asakusa Line  
 A 6 minute walk from Shimbashi Sta. on the Yurikamome Line



## LOCATION

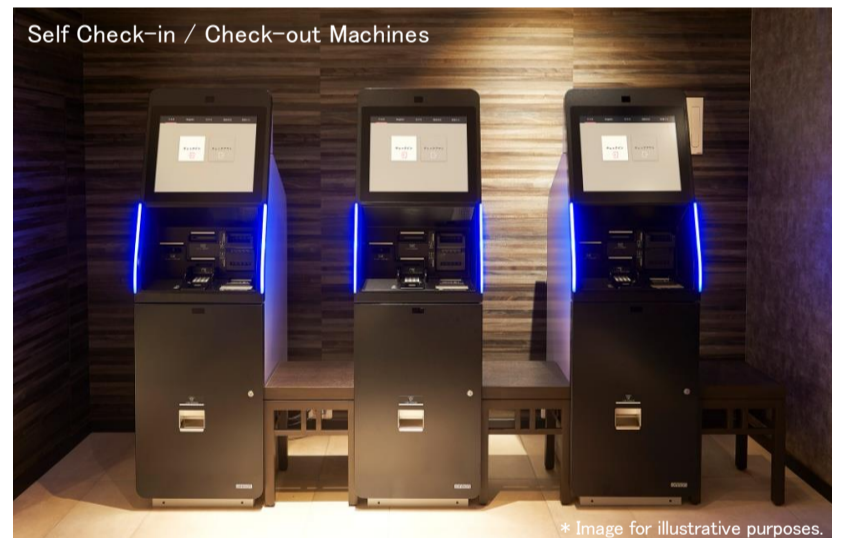
- Tokyo Sta. → Shimbashi Sta. (Approx 3 minutes by train)  
(JR Line・JR Tokaido Line)
  - Shimbashi Sta. → Ginza Sta. (Approx 2 minutes by train)  
(Tokyo Metro Ginza Line)
  - Shinagawa Sta. → Shimbashi Sta. (Approx 6 minutes by train)  
(JR Line)
  - Oshiage (SKYTREE) Sta. → Higashi-ginza Sta. (Approx 15 minutes by train)  
(Toei Asakusa Line)
  - Tokyo Big Sight Sta. → Shimbashi Sta. (Approx 23 minutes by train)  
(Yurikamome)
  - Haneda Airport Sta. → Higashi-ginza Sta. (Approx 35 minutes by train)  
(Keikyu Airport Line)
  - Haneda Airport Sta. → Hamamatsucho Sta. → Shimbashi Sta. (Approx 25 minutes by train)  
(Tokyo Monorail) (JR Line)
  - Haneda Airport Sta. → Ginza Sta. (Approx 75~130 minutes by train)  
(Airport Limousine Bus)
  - Narita Airport Sta. → Higashi-ginza Sta. (Approx 70 minutes by train)  
(Keisei Narita SKY ACCESS Line)
  - Narita Airport Sta. → Ginza Sta. (Approx 75~130 minutes by train)  
(Airport Limousine Bus)
- \*The nearest bus stop of Limousine bus is at Courtyard Tokyo Ginza Hotel Which is 3-minute walk from our hotel.
- The Kabukiza Theatre (Approx 8 minutes on foot)
  - Tokyo International forum (Approx 10 minutes on foot)
  - Hibiya Park (Approx 10 minutes on foot)
  - Imperial Theatre  
Shimbashi Sta. → Yurakucho Sta. (Approx 2 minutes by train)  
(JR Yamanote Line)
  - Senso Temple  
Higashi-ginza Sta. → Asakusa Sta. (Approx 11 minutes by train)  
(Toei Asakusa Line)
  - Odaiba Marine Park  
Shimbashi Sta. → Odaiba-kaihinkoen Sta. (Approx 13 minutes by train)  
(Yurikamome)
  - Tokyo Disney Resort  
Ginza Sta. → Hatchobori Sta. → Maihama Sta. (Approx 23 minutes by train)  
(Tokyo Metro Hibiya Line) (JR Keiyo Line)

Cashless payments only (no cash)



\* Image for illustrative purposes.

Self Check-in / Check-out Machines







\* Image for illustrative purposes.

Free amenity area



\* Image for illustrative purposes.

## FACILITIES

- |   |   |  |  |  |
|---|---|--|--|--|
| <br>Cashless payments only (no cash) | <br>Self Check-in & out Machines | <br>Smart check-in    | <br>Wi-Fi available | <br>Contactless IC key card |
| <br>Vending machines                 | <br>Coin-operated laundry        | <br>Free amenity area | <br>Courier service | <br>Rental PC               |

## Six Sotetsu Fresa Inn Highlights!

1. Heartfelt smiles and hospitality  
Offering service that makes you want to come back again.
2. Excellent location  
Located within a five-minute walk from major city stations.
3. Comfortable livability  
Free Wi-Fi, air purifier, high quality beds, two-piece waffle pajamas, and more...

4. Design and security  
Room IC cards have been enhanced by designers to ensure complete security.
5. Full set of amenities  
Bath additives, facial cleansers, teas, tea bags, etc., are available for your convenience.
6. Hygienic facilities  
Our specialized staff take pride in their thorough cleaning.

