



# Sotetsu Fresa Inn Kyoto-Hachijoguchi

Located in just a 2 minute walk from Kyoto Station.

Also it is perfect for guests having business and leisure trip in Kyoto and neighbor cities.

This hotel accepts cashless payment.

Please use a credit card or QR code payment system for payments of charges.

## ROOM EQUIPMENTS / AMENITY



LCD TV



Video on demand  
(charges apply)



Wi-Fi available  
in all rooms



Refrigerator



Electric kettle



Extension  
telephone



Air purifier with  
humidifying  
function



Hair dryer



Shampoo



Conditioner



Body wash



Body sponge



Bath towel



Face towel



Two-piece  
pajamas



Toothbrush



Razor



Slippers



Air freshener



Women's  
amenity kit



Women's amenity kit

\* Image for illustrative purposes.

\* Women's amenity kit is offered at the lobby.  
\* Mobile charger is lent at the front desk.

## NUMBERS OF GUEST ROOMS : 138

Room Type	Room size (㎡)	Bed size (mm)	Numbers of rooms	Floor
Single	12.8~13.9	1400	24	2~7
Comfort Double	15.9~16.8	1600	84	2~7
Universal Double	17.7	1400	1	2
Twin	16.8~17.7	1200 × 2	29	2~7

● 2 guests available: 114 rooms

All rooms are NON-Smoking

## BREAKFAST

### 【LOUNGE (1st floor)】

OPEN HOURS : 6:30~10:00(L.O.9:30)

NUMBERS OF SEATS : 47

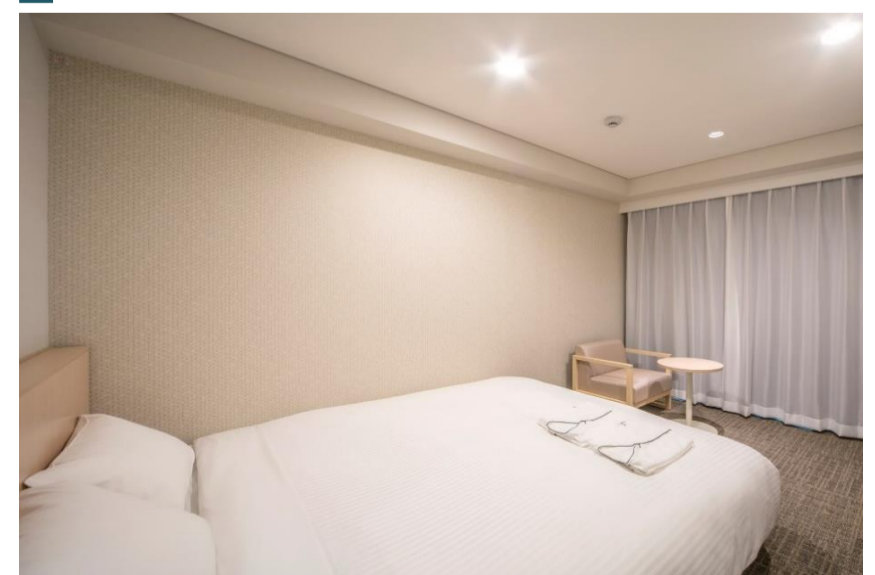
MENU : Japanese and Western-style buffet  
Kyoto-style pickles, tofu, and Obanzai  
(Kyoto-style side dishes)  
Kyoto-style white Miso soup, Bread / Cereal, Salada,  
Daily special (chicken teriyaki, scrambled eggs, etc.)  
Drink (Kyoto blend coffee, milk, orange juice or apple juice)

PRICE : 1,220 yen (tax included)

### Twin



### Comfort Double





## ABOUT THE HOTEL

ADDRESS : 11 Higashikujo-Nishisannocho, Minami-ku, Kyoto-city,  
Kyoto 601-8003

TEL : (+81)75-284-0203 FAX : (+81)75-284-2203

CHECK-IN/OUT : 15:00/11:00

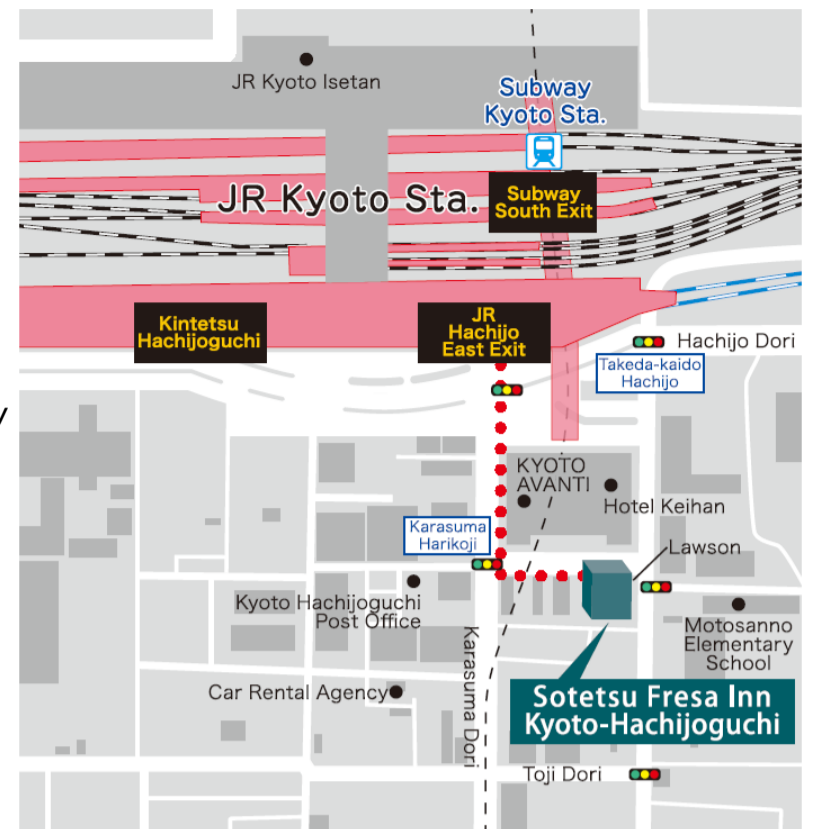
AVAILABLE PAYMENT : VISA • MASTER • JCB • AMEX • DINERS • DISCOVER • UnionPay  
METHODS LINE Pay • PayPay • d barai • au PAY • Rpay • ALIPAY • WeChatPay

\*This hotel accepts cashless payment.

E-MAIL : fresa\_hachijo@sotetsu-group.jp

URL : <https://fresa-inn.jp/en/hachijo/>

ACCESS : A 3 minute walk from the Hachijo East Exit in Kyoto Station



## LOCATION

- Kyoto Sta. → Kōkusaikaikan Sta. (Approx 20 minutes by train)  
(Subway Karasuma Line)
- Kyoto Sta. → Karasuma Oike → Higashiyama Sta. (Approx 15 minutes by train)  
(Subway Karasuma Line) (Subway Tozai Line)
- Kyoto Sta. → Tofukuji → Fushimi-Inari (Approx 17 minutes by train)  
(JR Nara Line) (Keihan main Line)
- Kyoto Sta. → Toji (Approx 20 minutes by train)  
(Kintetsu Kyoto Line)
- Kyoto Sta. → Nishi-Honganji-mae (Approx 9 minutes by bus)  
(Kyoto Municipal Bus)
- Kyoto Sta. → Kiyomizu-michi →  
(Kyoto Municipal Bus) (Walking)  
Kiyomizu-dera Temple (Approx 26 minutes by bus and on foot)
- Kyoto Sta. → Karasuma Oike Sta. → Nijojo-mae Sta. (Approx 10 minutes by train)  
(Subway Karasuma Line) (Subway Tozai Line)
- Kyoto Sta. → Osaka Sta. (Approx 29 minutes by train)  
(JR Kyoto Line)



## FACILITIES



Cashless payments



Self Check-in & out Machines



Smart check-in



Internet section



Wi-Fi available



Contactless IC key card



Vending machines



Coin-operated laundry



Free amenity area



Courier service



Rental PC



Smoking space



## Six Sotetsu Fresa Inn Highlights!

### 1. Heartfelt smiles and hospitality

Offering service that makes you want to come back again

### 2. Excellent location

Located within a five-minute walk from major city stations

### 3. Comfortable livability

Free Wi-Fi, air purifier, high quality beds, two-piece waffle pajamas, and more...

### 4. Design and security

Room IC cards have been enhanced by designers to ensure complete security

### 5. Full set of amenities

Free amenities and ladies' amenities including bath additives and tea bags

### 6. Hygienic facilities

Our specialized staff take pride in their thorough cleaning

SOTETSU  
**FRESA**  
INN  
FRESH - Sense - Amenity