



# Sotetsu Fresa Inn Ochanomizu-Jimbocho

A 3 minute walk from Jimbocho Station.

Located within walking distance of Ochanomizu and Suidobashi, this hotel is perfect for business or sightseeing.

We accept cashless payment only – credit card or QR code payment.

Please use a credit card or QR code payment system for payments of room charges.

We do not accept cash payment.

## ROOM EQUIPMENTS / AMENITY



LCD TV



Video on demand  
(charges apply)



Free  
Wi-Fi  
available in all  
rooms



Refrigerator



Electric  
kettle



Extension  
telephone



Air purifier  
with humidifying  
function



Ionic hair  
dryer



Shampoo



Conditioner



Body wash



Bath towel



Face towel



Body sponge



Two-piece  
pajamas



Toothbrush



Razor

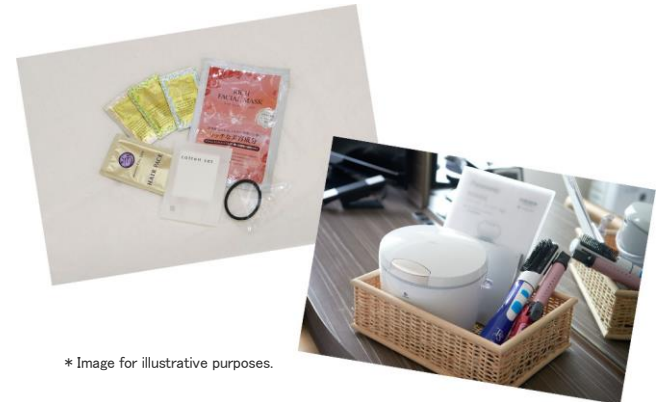


Slippers



Air freshener

### ■ Skin care / Hair care amenities



\* Image for illustrative purposes.

\* Other complimentary amenities are available for your choice in the lobby.

\* Mobile charger is lent at the front desk.

## NUMBERS OF GUEST ROOMS : 130

Room Type	Room size (㎡)	Bed size (mm)	Maximum number of people	Numbers of rooms	Floor
Single	9.0~9.5	1,200	1	35	2~8
Double	9.5~10.3	1,400	2	34	2~9
Superior Double	11.5	1,400	2	30	2~9
Comfort Double	11.3	1,400	2	8	2~9
Deluxe Double	11.4~11.9	1,600	2	6	3~8
Relax Double	13.5	1,400 (sofa bed available)	3	2	9
Twin (Connecting)	13.6	1,200 × 2	2	6	3~8
Boutique Twin	18.3	1,200 × 2 (sofa bed available)	3	2	9
Universal Twin	20.4	1,200 × 2	2	1	2
Connecting Deluxe Double	11.4	1,600	2	6	3~8

● Non-Smoking Room: 96 rooms (2,3,5,6,7,9 floor)

● Smoking Room: 34 rooms (4,8 floor)

## BREAKFAST

### 【LITTLE MERMAID (1st floor)】

OPEN HOURS : 6:30~10:00AM (9:30LO.)

NUMBERS OF SEATS : 30

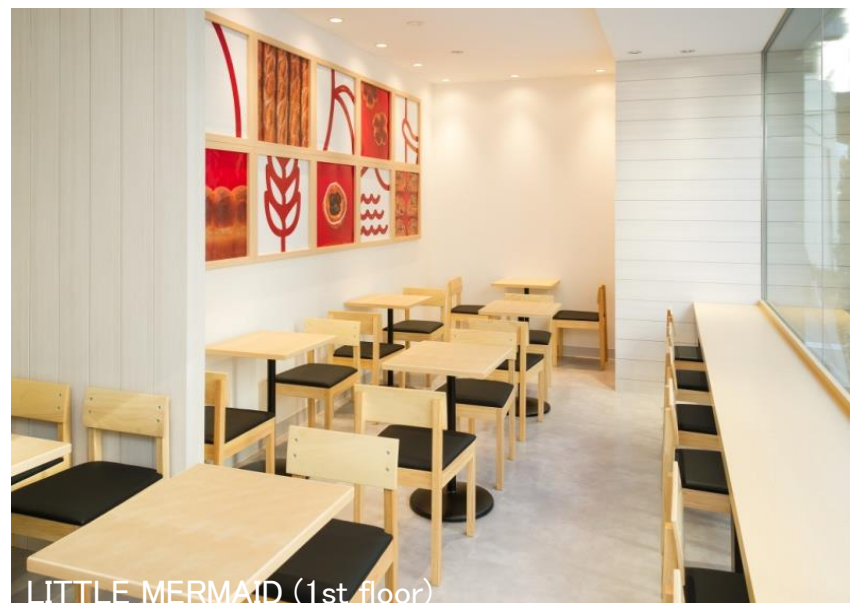
MENU : Enjoy your breakfast at LITTLE MERMAID, the bakery on the first floor of the hotel.  
• Daily morning set (Bread, Salad, Drink)

PRICE : 800 yen (tax included)

### ■ Twin



\* Image for illustrative purposes.



LITTLE MERMAID (1st floor)



## ABOUT THE HOTEL

ADDRESS : 1-19-7 Kanda-jimbocho, Chiyoda-ku, Tokyo 101-0051

TEL : (+81)3-3518-8203 FAX : (+81)3-3518-8208

CHECK-IN/OUT : 15:00/11:00

AVAILABLE PAYMENT : VISA・MASTER・JCB・AMEX・DINERS・DISCOVER・UnionPay

METHODS : LINE Pay・PayPay・d barai・au PAY・Rpay・ALIPAY・WeChatPay

\* We accept cashless payment only. (no cash)

E-mail : fresa\_jinbocho@sotetsu-group.jp

URL : <https://fresa-inn.jp/en/jinbocho/>

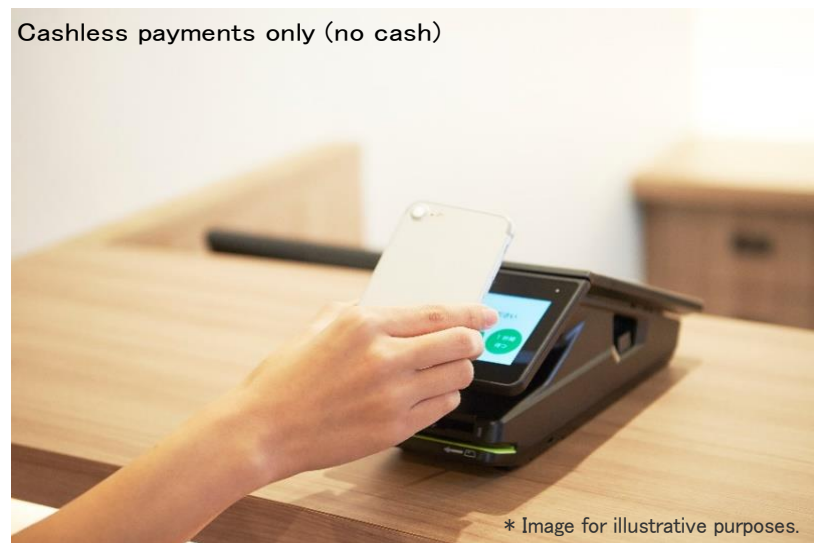
ACCESS : A 4 minute walk from Exit A7 in Jimbocho Station on the Tokyo Metro Hanzomon Line, Toei Shinjuku and Mita Lines  
 A 8 minute walk from the Ochanomizubashi Exit in Ochanomizu Station on the JR Sobu and Chuo Lines  
 A 9 minute walk from Exit 1 (Exit JR) in Ochanomizu Station on the Tokyo Metro Marunouchi line  
 A 6 minute walk from Exit B3 in Shin-ochanomizu Station on the Tokyo Metro Chiyoda line  
 A 6 minute walk from Exit B7 in Ogawamachi Station on the Toei Shinjuku line  
 A 6 minute walk from Exit B7 in Awajicho Station on the Tokyo Metro Marunouchi line



## LOCATION

- Tokyo Sta. → Ochanomizu Sta. (Approx 4 minutes by train)  
(JR Chuo Line)
- Tokyo Sta. → Otemachi Sta. → Jimbocho Sta. (Approx 6 minutes by train)  
(Tokyo Metro Marunouchi Line) (Tokyo Metro Hanzomon Line)
- Kanda Sta. → Ochanomizu Sta. (Approx 2 minutes by train)  
(JR Chuo Line)
- Ginza Sta. → Ochanomizu Sta. (Approx 8 minutes by train)  
(Tokyo Metro Marunouchi Line)
- Shinagawa Sta. → Tokyo Sta. → Ochanomizu Sta. (Approx 17 minutes by train)  
(JR Keihin-tohoku Line) (JR Chuo Line)
- Shinjuku Sta. → Ochanomizu Sta. (Approx 9 minutes by train)  
(JR Chuo Line)
- Shinjuku Sta. → Jimbocho Sta. (Approx 11 minutes by train)  
(Toei Subway Shinjuku Line)
- Ueno Sta. → Mitsukoshimae Sta. → Jimbocho sta. (Approx 17 minutes by train)  
(Tokyo Metro Ginza Line) (Tokyo Metro Hanzomon Line)
- Akihabara Sta. → Ochanomizu Sta. (Approx 2 minutes by train)  
(JR Chuo Line)
- Asakusa Sta. → Mitsukoshimae Sta. → Jimbocho Sta. (Approx 22 minutes by train)  
(Tokyo Metro Ginza Line) (Tokyo Metro Hanzomon Line)
- Haneda Airport  
Haneda Airport Sta. → Mita Sta. → Jimbocho Sta. (Approx 38 minutes by train)  
(Keikyu Airport Line) (Toei Subway Mita Line)
- Narita Airport (Approx 75 minutes by train)  
Narita Airport Line → Higashi-nihombashi Sta. → Bakuro yokoyama Sta. → Jimbocho Sta.  
(Keisei Narita Sky Access Line) (Walking) (Toei Subway Shinjuku Line)
- TOKYO DOME  
Suidobashi → Ochanomizu Sta. (Approx 1 minutes by train)  
(JR Sobu Line)
- Nippon Budokan  
Kudanshita Sta. → Jimbocho Sta. (Approx 1 minutes by train)  
(Tokyo Metro Hanzomon Line) (Toei Shinjuku Line)
- Tokyo Disney Resort  
Maihama Sta. → Tokyo Sta. → Ochanomizu Sta. (Approx 30 minutes by train)  
(JR Keiyo Line) (JR Chuo Line)

Cashless payments only (no cash)



\* Image for illustrative purposes.



\* Image for illustrative purposes.

## FACILITIES

- Cashless payments only (no cash)
- Check-in & out Machines
- Smart check-in
- Internet section
- Wi-Fi available
- Contactless IC key card
- Vending machines
- Coin-operated laundry
- Courier service
- Rental PC
- Free amenity area

Free amenity area



\* Image for illustrative purposes.

## Six Sotetsu Fresa Inn Highlights!

### 1. Heartfelt smiles and hospitality

Offering service that makes you want to come back again.

### 2. Excellent location

Located within a five-minute walk from major city stations.

### 3. Comfortable livability

Free Wi-Fi, air purifier, high quality beds, two-piece waffle pajamas, and more...

### 4. Design and security

Room IC cards have been enhanced by designers to ensure complete security.

### 5. Full set of amenities

Bath additives, facial cleansers, teas, tea bags, etc., are available for your convenience.

### 6. Hygienic facilities

Our specialized staff take pride in their thorough cleaning.

SOTETSU  
FRÉSA  
INN  
FRÉsh・Sense・Amenity