



# Sotetsu Fresa Inn Nagano-Ueda

Good location with one minute's walk from JR Ueda Station.  
 Located in front of the station, easy access to your destination with bus and taxi.

It is perfect for business and leisure.

Payment method for charges of our hotel is going to shift to cashless payments, from February 1, 2022.

Please use a credit card or QR code payment system for payments of room charges. We do not accept cash payments.

## ROOM EQUIPMENTS / AMENITY



LCD TV



Wi-Fi



Cool box



Electric kettle



Extension telephone



Air purifier with humidifying function



Ionic hair dryer



Shampoo



Conditioner



Body wash



Bath towel



Face towel



Slippers



Air freshener

\* Other complimentary amenities are available for your choice in the lobby.  
 \* Mobile charger is lent at the front desk.

## Skin care / Hair care amenities



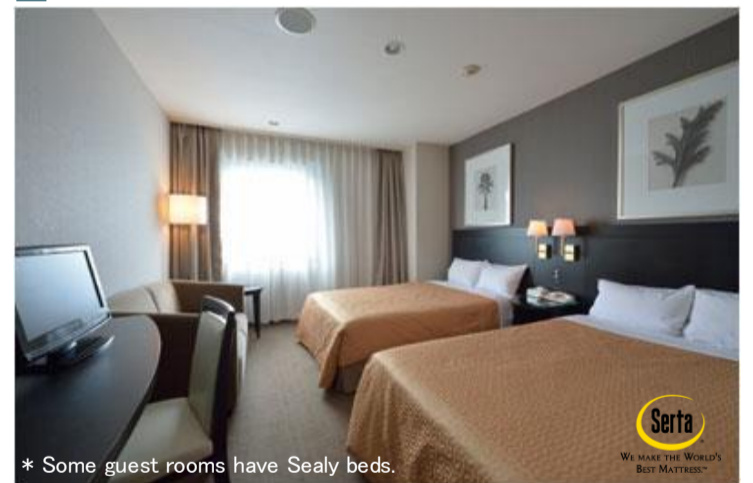
\* Image for illustrative purposes.

## NUMBERS OF GUEST ROOMS : 118

Room Type	Room size (㎡)	Bed size (mm)	Maximum number of people	Number of rooms	Floor
Single	13.2	1200	1	39	4~11
Superior Single	14.3	1200	1	48	4~11
Double	15.1	1400	2	8	4~11
Twin	19.0	1200	2	3	6~10
Superior Twin	21.8	1200	2	16	4~11
Deluxe Twin	26.8	1200 (sofa bed available)	3	4	5~11

- Non-Smoking Room: 75 rooms (5•6•8•9•10 floor)
- Smoking Room: 43 rooms (4•7•11 floor)

## Twin



\* Some guest rooms have Sealy beds.

## Rinsen "Koku"



## BREAKFAST

### 【Restaurant Rinsen "Koku" (2nd floor)】

OPEN HOURS : 6:30~9:30AM (L.O. 9:00)

NUMBERS OF SEATS : 84

MENU : Japanese and Western ever-popular menus.  
 Please enjoy a breakfast that uses ingredients produced in Shinshu Ueda.

PRICE : 1,200 yen (tax included)

## ABOUT THE HOTEL

ADDRESS : 1-8-2 tenjin, Ueda-shi, Nagano 386-0025  
 TEL : (+81)268-80-2031 FAX : (+81)268-80-2035  
 CHECK-IN/OUT : 15:00/11:00  
 CREDIT : VISA・MASTER・JCB・AMEX・DINERS・UnionPay  
 E-MAIL : fresa\_ueda@sotetsu-group.jp  
 URL : <https://fresa-inn.jp/en/ueda/>  
 ACCESS : One minute's walk from Ueda Station of the JR Hokuriku Shinkansen, Shinano Line of the Shinano Railway and Ueda Electric Railway Bessho Line



## LOCATION

\*Estimated travel time is based on Google map.

- Tokyo Sta. → Ueda Sta. (Approx 90 minutes by train)  
(JR Hokuriku-Shinkansen)
- Nagano Sta. → Ueda Sta. (Approx 11 minutes by train)  
(JR Hokuriku-Shinkansen)
- Matsumoto Sta. → Ueda Sta. (Approx 80 minutes by train)  
(JR Shinetsu Main Line)
- Toyama Sta. → Ueda Sta. (Approx 76 minutes by train)  
(JR Hokuriku-Shinkansen)
- Nagoya Sta. → Ueda Sta. (Approx 207 minutes by train)  
(JR Shinetsu Main Line)
- Shinshu-Matsumoto Airport → Matsumoto Sta. → Shinonoi Sta. → Ueda Sta. (Approx 135 minutes by bus and train)  
(Route bus) (JR Shinonoi Line) (Shinano Railway)
- Uedajoseki Koen (Approx 15 minutes on foot)
- Kitamuki Kannon temple・Bessho-Onsen  
Bessho-Onsen Sta. → Ueda Sta. (Approx 30 minutes by train)  
(Ueda Electric Railway Bessho Line)

Payment method for charges of our hotel is going to shift to cashless payments, from February 1, 2022.(No Cash)



### Self Check-in / Check-out Machines



## FACILITIES



### Free amenity area



## Six Sotetsu Fresa Inn Highlights!

### 1. Heartfelt smiles and hospitality

Offering service that makes you want to come back again.

### 2. Excellent location

Located within a five-minute walk from major city stations.

### 3. Comfortable livability

Free Wi-Fi, air purifier, high quality beds, two-piece waffle pajamas, and more...

### 4. Design and security

Room IC cards have been enhanced by designers to ensure complete security.

### 5. Full set of amenities

Bath additives, facial cleansers, teas, tea bags, etc., are available for your convenience.

### 6. Hygienic facilities

Our specialized staff take pride in their thorough cleaning.

