



# Sotetsu Fresa Inn Yokohama-Higashiguchi

Open on the 25th October 2020

The hotel is conveniently located just 2 minute walk from the North-East Exit A of Yokohama Station. Perfect not just for shopping and having a meal near Yokohama Station, but also very close to tourist hotspots in Yokohama such as the Yokohama Chinatown, Minatomirai, Yokohama Red Brick Warehouse, Yamashita Park, and others, all within a 10 minutes train ride. So, it's perfect for sightseeing too.

We accept cashless payment only – credit card or QR code payment.

Please use a credit card or QR code payment system for payments of charges.

## ROOM EQUIPMENTS / AMENITY



LCD TV



Wi-Fi available in all rooms



Refrigerator



Electric kettle



Extension telephone



Air purifier with humidifying function



Hair dryer



Shampoo



Conditioner



Body soap



Bath towel



Face towel



Two-piece pajamas



Toothbrush



Razor



Slippers



Air freshener



Body sponge



Women's amenity kit

\* Women's amenity kit is offered at the lobby.

\* Mobile charger is lent at the front desk.

### Women's amenity kit



\* Image for illustrative purposes.

### Central type water purification system (Ryosui Kobo)



Ryosui Kobo's central water purification has been implemented. All the water to be used in the hotel including water for the washstand, the shower, and the toilet has been changed into gentle water by it.

## NUMBERS OF GUEST ROOMS : 283

Room Type	Room size (m <sup>2</sup> )	Bed size(mm)	Maximum number of people	Numbers of rooms	Floor
Double	11.6	1400	2	77	2~14
Connecting Double	11.9	1400	2	13	2~14
Superior Double	11.9	1600	2	77	2~14
Twin	16.5	1200 × 2	2	66	2~14
Connecting Twin	16.5	1200 × 2	2	13	2~14
Deluxe Twin (Triple)	24.9	1200 × 2 (sofa bed available)	3	35	2~14
Universal Twin (Triple)	24.9	1600 (sofa bed available)	3	2	3

● All rooms are NON-Smoking

## BREAKFAST

### 【BECK'S COFFEE SHOP (1st floor)】

OPEN HOURS : 6:30~11:00 L.O.

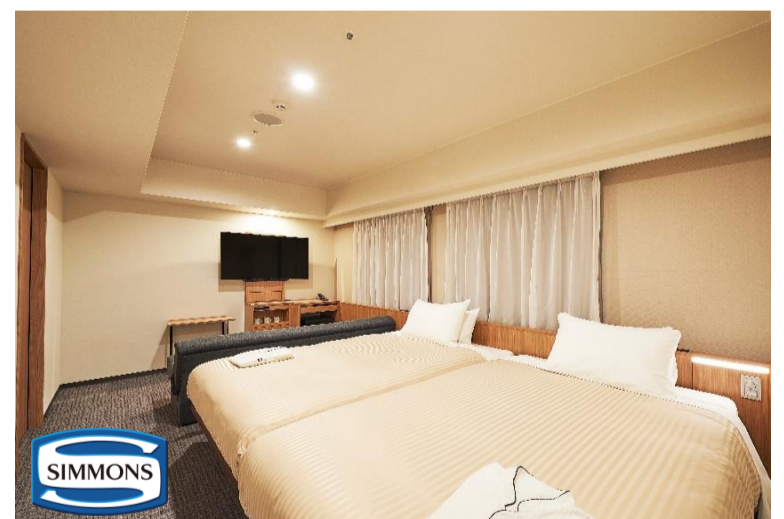
NUMBERS OF SEATS : 63

**MENU** : You can get breakfast at BECK'S COFFEE SHOP located at the ground floor of the hotel.  
You can choose from 3 selections on the menu.  
Enjoy their coffee, freshly brewed from high quality coffee beans from select farms around the world.

**PRICE** : 700 yen (tax included)

\*Menu changes depending on the season.

### Twin



### Breakfast



**BECK'S  
COFFEE SHOP**

## ABOUT THE HOTEL

ADDRESS : 5-10 Kinko-cho, Kanagawa-ku, Yokohama-shi, Kanagawa 221-0056

TEL : (+81)45-285-2031 FAX : (+81)45-285-2030

CHECK-IN/OUT : 15:00/11:00

AVAILABLE PAYMENT METHODS : VISA • MASTER • JCB • AMEX • DINERS • DISCOVER • UnionPay

\*We accept cashless payment only. LINE Pay • PayPay • d barai • au PAY • Rpay • ALIPAY • WeChatPay

E-mail : fresa\_yokohama-higashiguchi@sotetsu-group.jp

URL : <https://fresa-inn.jp/yokohama-higashiguchi>

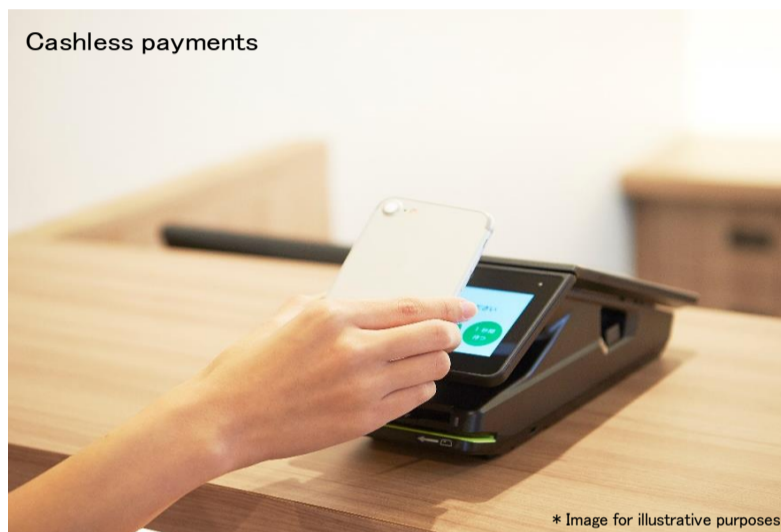
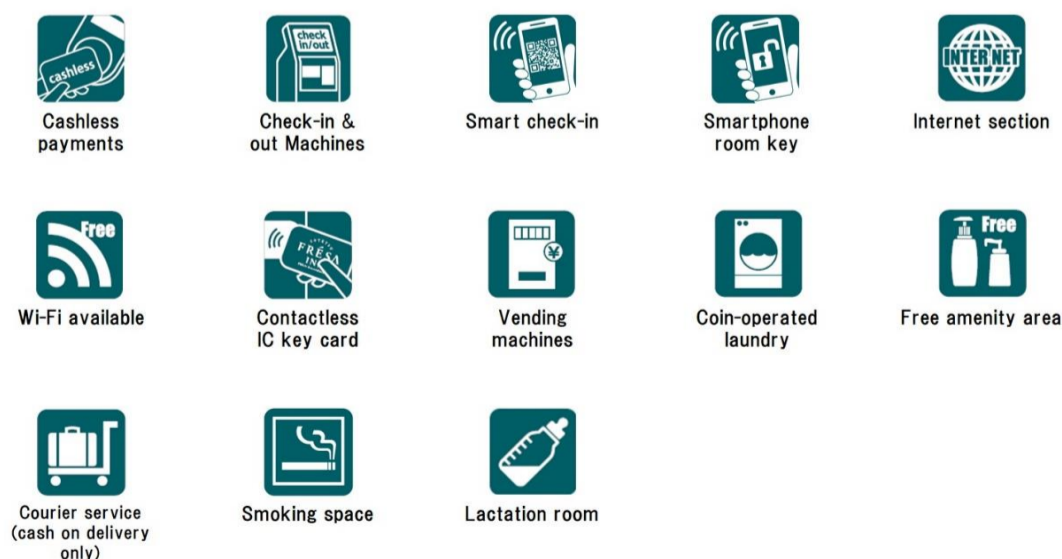
ACCESS : A 2 minute walk from North-East Exit A in Yokohama Station on the JR Line, Sotetsu Line, Tokyu Line, Keikyu Line, Yokohama Municipal Subway Blue Line, Minatomirai Line.

## LOCATION

- Shin-Yokohama Sta. → Yokohama Sta. (Approx 10 minutes by train)  
(Yokohama Municipal Subway Blue Line)
- Shinagawa Sta. → Yokohama Sta. (Approx 17 minutes by train)  
(JR Tokaido Line/Keikyu Main Line)
- PACIFICO Yokohama [Minatomirai Sta.] (Approx 3 minutes by train)  
Minatomirai Sta. → Yokohama Sta.  
(Minatomirai Line)
- The Yokohama Landmark Tower [Sakuragicho Sta.] (Approx 3 minutes by train)  
Sakuragicho Sta. → Yokohama Sta.  
(JR Keihin-Tohoku Negishi Line)
- Yokohama Red Brick Warehouse [Bashamichi Sta.] (Approx 5 minutes by train)  
Bashamichi Sta. → Yokohama Sta.  
(Minatomirai Line)
- Yokohama Stadium [Kannai Sta.] (Approx 5 minutes by train)  
Kannai Sta. → Yokohama Sta.  
(JR Keihin-Tohoku Negishi Line)
- Yokohama Chinatown [Motomachi-Chukagai Sta.] (Approx 8 minutes by train)  
Motomachi-Chukagai Sta. → Yokohama Sta.  
(Minatomirai Line)
- Haneda Airport (Approx 25 minutes by bus)  
Haneda Airport → Yokohama Sta. (YCAT)  
(Express bus)
- Narita Airport (Approx 85 minutes by bus)  
Narita Airport → Yokohama Sta. (YCAT)

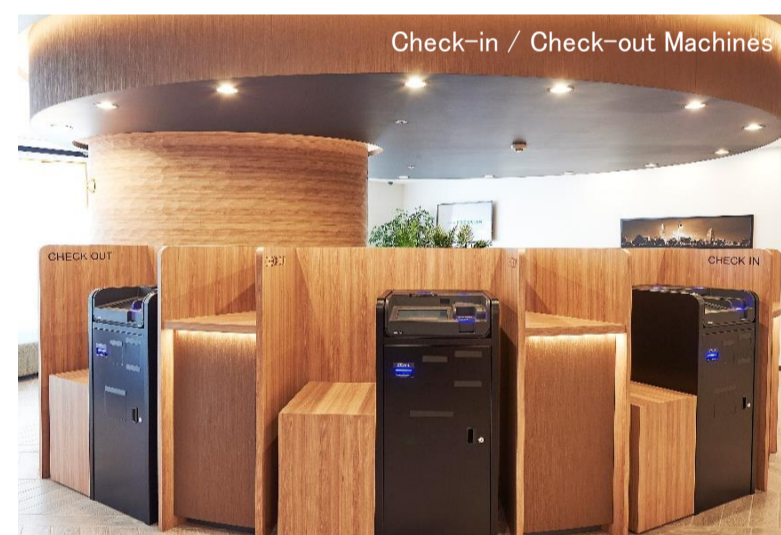
\*Estimated travel time is based on Google map.

## FACILITIES



Cashless payments

\* Image for illustrative purposes.



Check-in / Check-out Machines



Free amenity area

\* Image for illustrative purposes.

## Six Sotetsu Fresa Inn Highlights!

1. Heartfelt smiles and hospitality  
Offering service that makes you want to come back again
2. Excellent location  
Located within a five-minute walk from major city stations
3. Comfortable livability  
Free Wi-Fi, air purifier, high quality beds, two-piece waffle pajamas, and more...
4. Design and security  
Room IC cards have been enhanced by designers to ensure complete security
5. Full set of amenities  
Free amenities and ladies' amenities including bath additives and tea bags
6. Hygienic facilities  
Our specialized staff take pride in their thorough cleaning

SOTETSU  
**FRESA**  
INN  
FRESH-SENSE-AMENITY